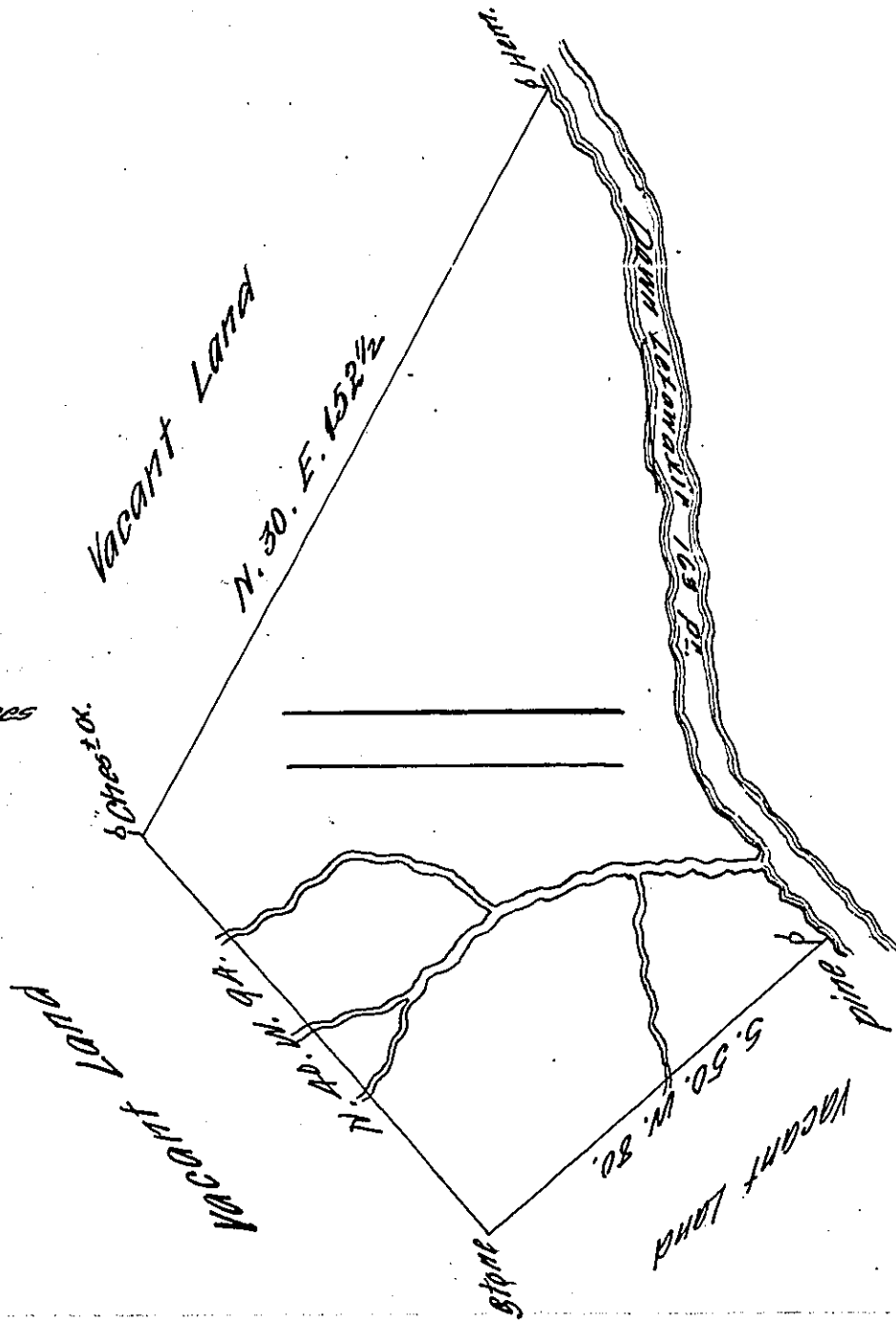


5.30 . E 14
 5.18 . E 20
 5.5 . E 78
 5.24 . E 27
 5.37 . E 24
 163

The beginning & Distances down the creek.



By Virtue of a Warrant dated the 22^d of April 1776 Surveyed the 18th of November 1776 to John Lord the above described tract of Land situate on the South Side of Lckrawackscin about one mile above the mouth of the same in Northampton County Containing Seventy Acres three quarters and the allowance of six p. Cent &c.

p Geo Palmer D.S.

*To Daniel Brodhead Esq }
Surveyor General }*

IN TESTIMONY that the above is a copy of the original remaining on file in the Department of Internal Affairs of Pennsylvania, made conformably to an Act of Assembly approved the 16th day of February, 1833, I have hereunto set my Hand and caused the Seal of said Department to be affixed at Harrisburg, this _____ tenth _____ day of May 1911.

Harry Howell
Secretary of Internal Affairs.